



Visaton DL18-2

Assessment

The DL18-2 is the 2-way version of the DL18. Its frequency response is similar to that of the broad-range DL18 in terms of its overall properties but with a lowering of the level to 1 kHz and a slight emphasis on the range above 2 kHz. As a result, the DL18-2 has a pleasing sound quality well-suited to high-quality voice reproduction. However, this will be thoroughly ruined if the optional fire-proof housing is fitted, as can be seen from the blue line in the frequency response graph. With its 70 watt output, the music output rating of this 25 mm voice coil, 6.5" driver, the speaker is in an excellent position to make itself heard. From 100 Hz it is possible to produce 100 dB and above 2 kHz a deafening

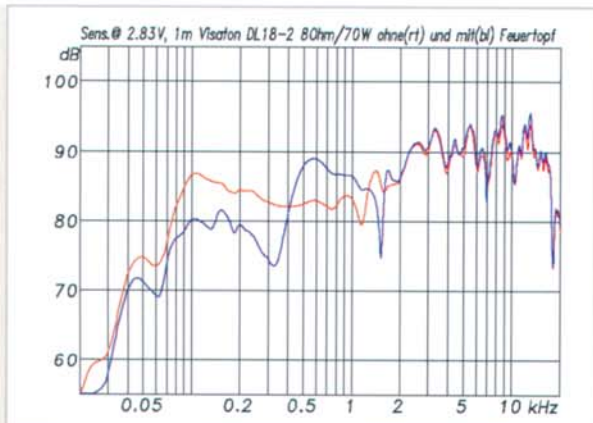
110 dB can be achieved with only a 3% distortion factor, thanks to the high sensitivity rating and low diaphragm displacement. The "waterfall" graph does show some reverberations in this frequency range but these are completely harmless. Thanks to the additional tweeter, the isobars extend upwards by a considerable amount in comparison with the broad-range version enabling sound at 10 kHz to be radiated over $\pm 30^\circ$. Three powerful spring-loaded "mouse-trap" clips defy gravity to ensure that this speaker remains in its 20 cm cut-out. But mind your fingers as you release the clips!

Specifications

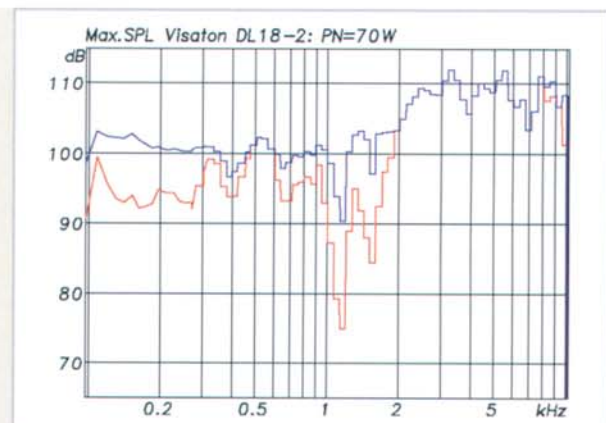
Speaker type	8 / 70 W, 2 way
Cut-out size	20 cm
Weight	1.15 kg
Option	fire-proof housing, transformer
Price	approx. DM 99.60

Specifications

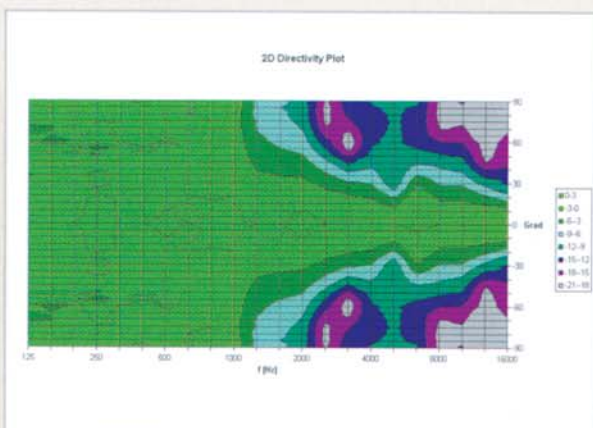
Sensitivity 100 Hz to 10 kHz 1W/1m	86.1 dB
Sensitivity 200 Hz to 3 kHz 1W/1m	84.3 dB
Deviation 100 Hz to 10 kHz	10.5 dB
Deviation 200 Hz to 3 kHz	9.8 dB
Max. SPL 100 Hz to 10 kHz	103.2 dB
Max. SPL 200 Hz to 3 kHz	101.2 dB
Radiation angle -6 dB (up to 10 kHz)	$\pm 30^\circ$
Radiation angle -6 dB (up to 3 kHz)	$\pm 40^\circ$



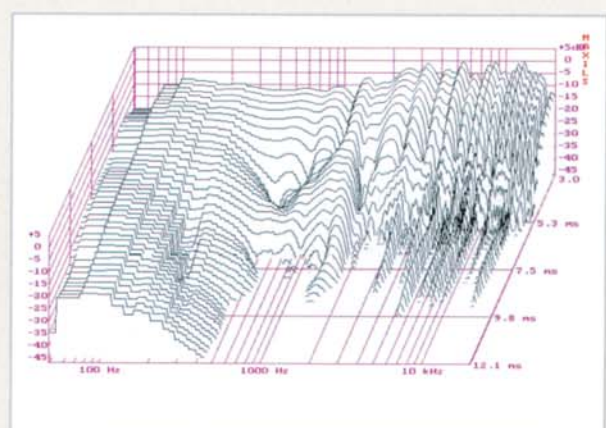
Frequency response DL18/2



Maximum level DL 18/2



Directivity DL 18/2



Fall-off spectrum DL 18/2